

# Hanmi Pharm.

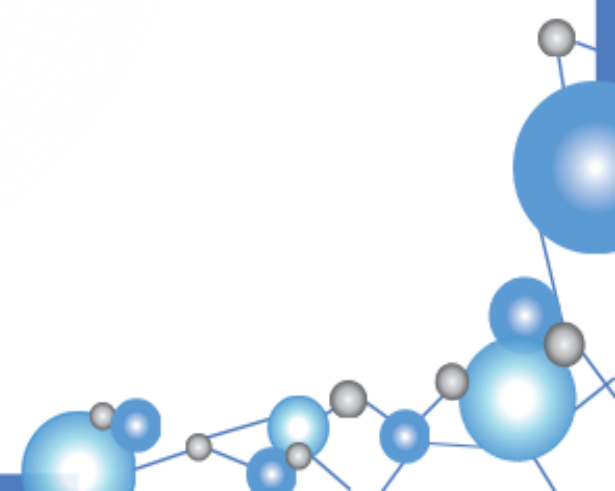
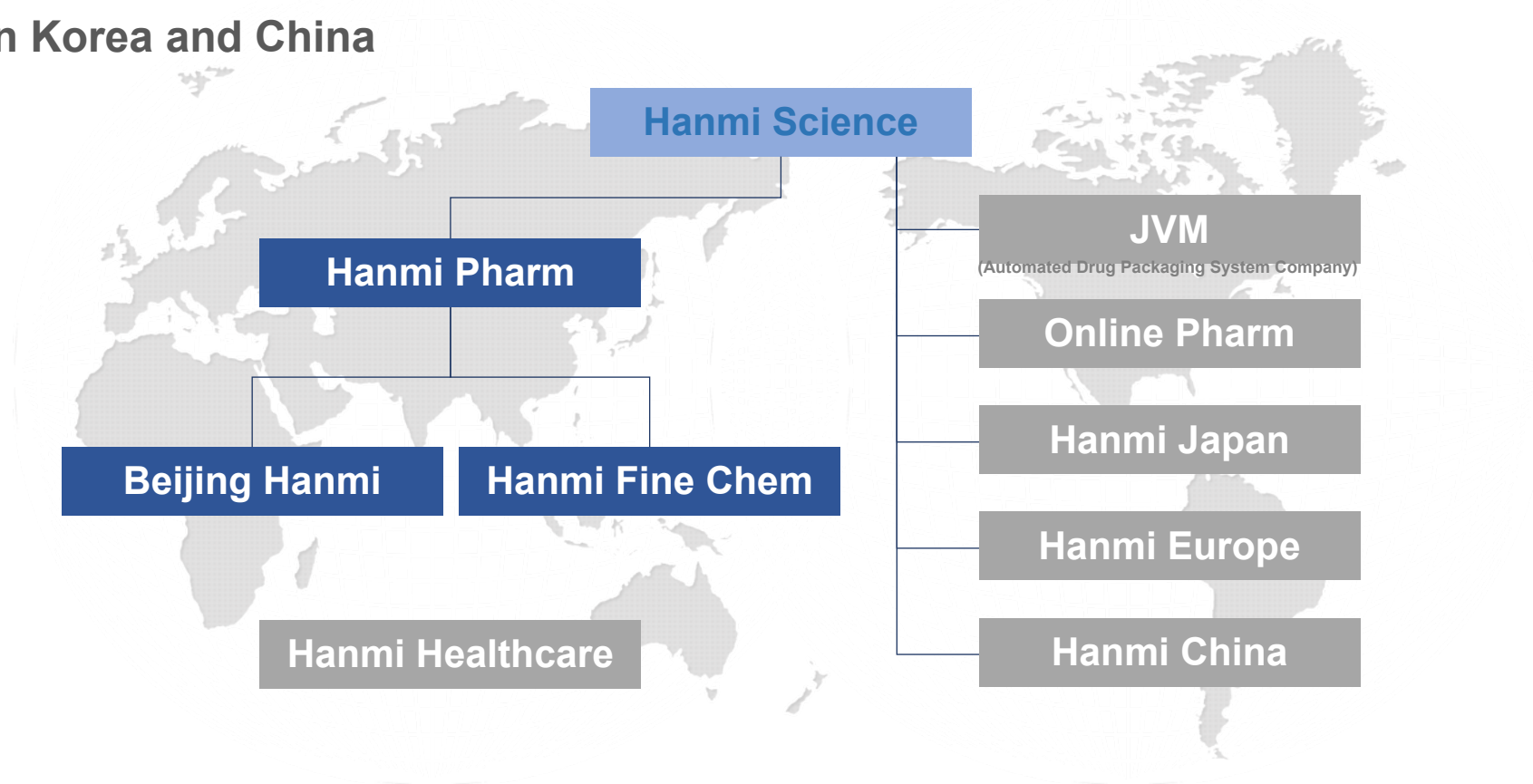
Seoul, Korea

**Seungjae Baek M.D., Ph.D.**  
**Chief Medical Officer**

**Hanmi**

# About the Company

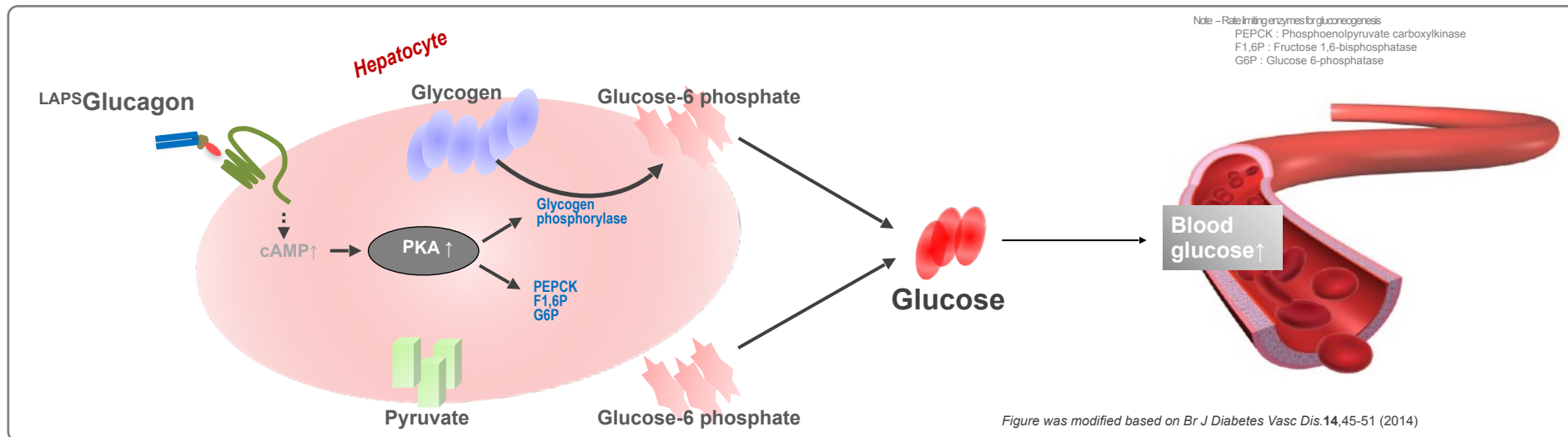
Hanmi is a leading R&D oriented company with fully integrated value chains in Korea and China



# Mechanism of Action

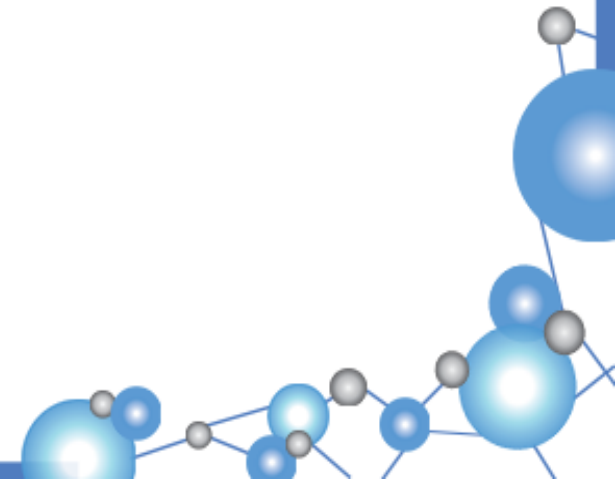
## ✓ HM15136 (LAP<sup>5</sup>Glucagon Analogue)

- HM15136 acts like glucagon, a hormone produced by the pancreas that helps the body maintain normal blood sugar levels by increasing the glucose produced in the liver and breaking down glycogen (a form of stored glucose) into the usable glucose form.
- Ready-to-inject soluble long acting glucagon for weekly SQ injection
- Orphan Drug Designation : US, EU and Korea



# Goal of ACHIEVE Study

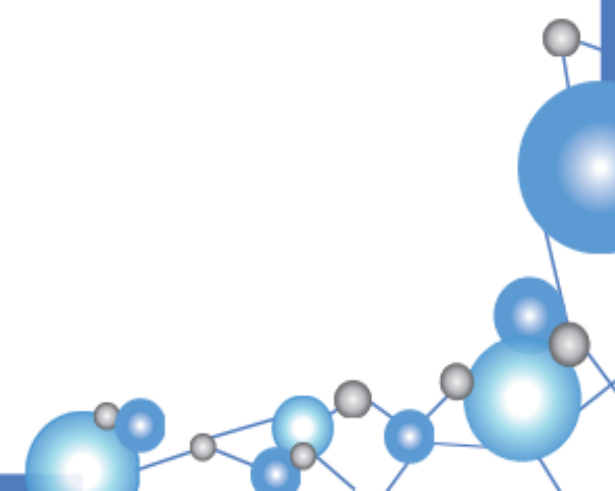
- ✓ **Primary Objectives:** To evaluate the Safety & Tolerability
- ✓ **Secondary Objective:** To evaluate the Reduction of Hypoglycemia event
- ✓ **Exploratory Objectives:**
  - To evaluate the reduction of serious hypoglycemia events
  - To evaluate the reduction of nutritional support
  - To evaluate the quality of life (QoL)



# What is Covered to Participate

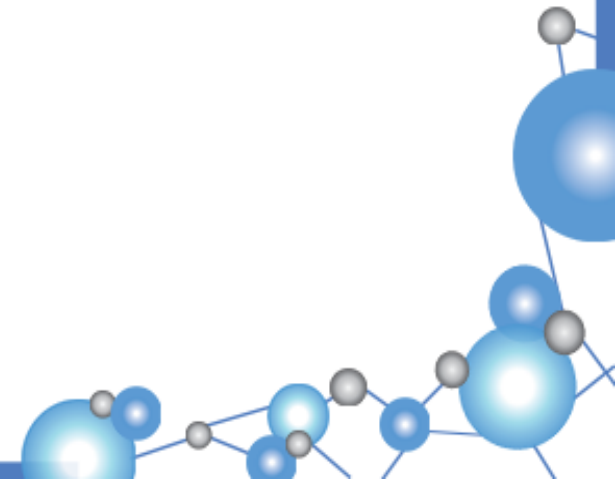
## ✓ As a participant in the study you will:

- Receive a study drug at the hospital once a week for 8 weeks;
- Have electrocardiograms (ECGs);
- Wear a continuous glucose monitor (CGM) and use a handheld glucose meter;
- Have blood and urine tests; and
- Complete an electronic diary (eDiary).



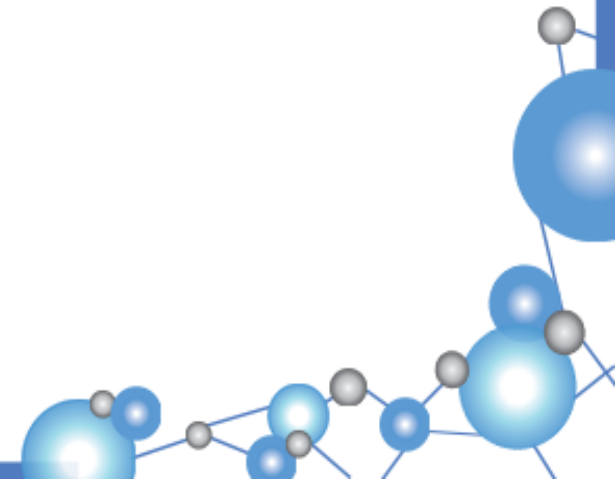
# Inclusion Criteria

- ✓ **≥2 years old (US, EU>12Year Old)**
  
- ✓ **Persistent Hypoglycemia, nevertheless with below treatment**
  - Diazoxide
  - Somatostatin analogues (Octreotide, Lanreotide, etc)
  - Other medications (Sirolimus, Nifedipine, etc)



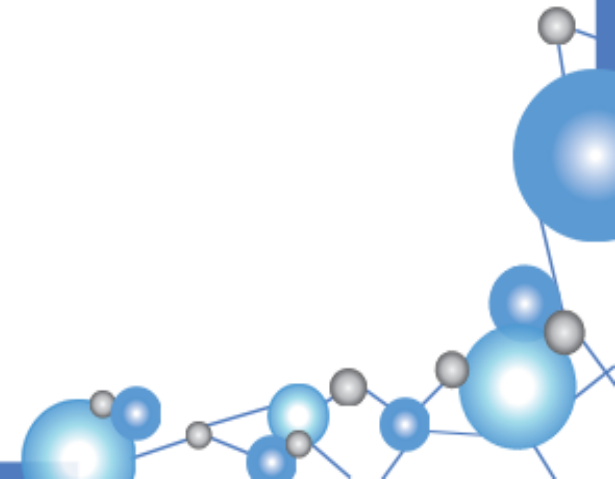
# Exclusion Criteria

- ✓ **Type 1 or 2 DM**
- ✓ **Continuous intravenous glucose or glucagon infusion requiring hospitalization of >1 week within 1 month**
- ✓ **Poor general condition or severe laboratory abnormalities**
- ✓ **Unable for the study assessments (glucose meter, questionnaire, etc)**



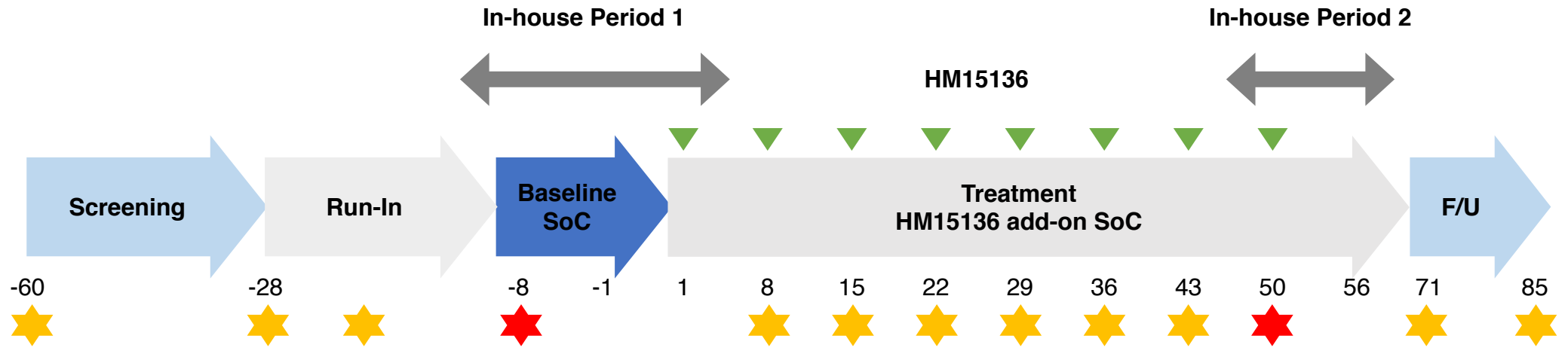
# Exclusion Criteria

- ✓ **Type 1 or 2 DM**
- ✓ **Continuous intravenous glucose or glucagon infusion requiring hospitalization of >1 week within 1 month**
- ✓ **Poor general condition or severe laboratory abnormalities**
- ✓ **Unable for the study assessments (glucose meter, questionnaire, etc)**



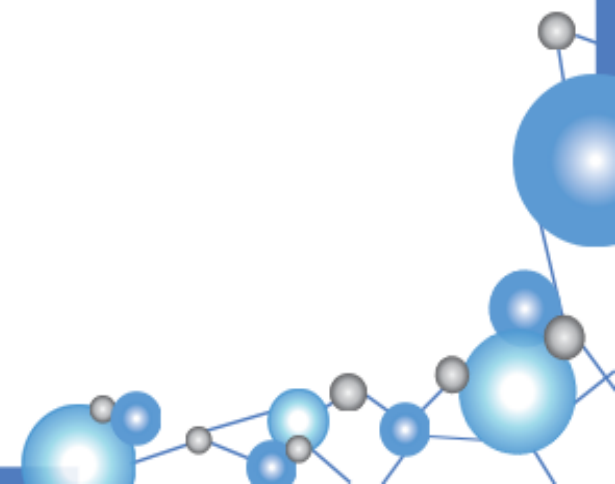


# Details about the Study: Study Visits



✓ Visit study doctor 13 times (11 outpatient and 2 inpatient)

- Hospitalization (x2 times, 13 and 9 days)
- Weekly outpatient clinic visit during 8 weeks



# Study Centers



*ACHIEVE study is a multicentered Phase 2 study at centers in United States, United Kingdom, Germany, and Israel.*

***Currently actively recruiting!***



# For More Information,

Please visit <http://ACHIEVE.study>, or scan below QR code.

