

Diabetes Technology

New and Noteworthy



Presented by Kelli O'Connell, MS, RD, LDN, CDCES, CPT in April 2023

About Kelli



- Masters-level Certified Diabetes Care and Education Specialist [CDCES]
- Certified Product Trainer with Tandem Diabetes Care and Insulet
- Former CHOP diabetes educator and technology consultant to the CHI team
- Current clinician onboarding specialist at Tidepool Project, a not-for-profit organization offering a diabetes data visualization platform and the pioneers of FDA approval for Loop



Agenda

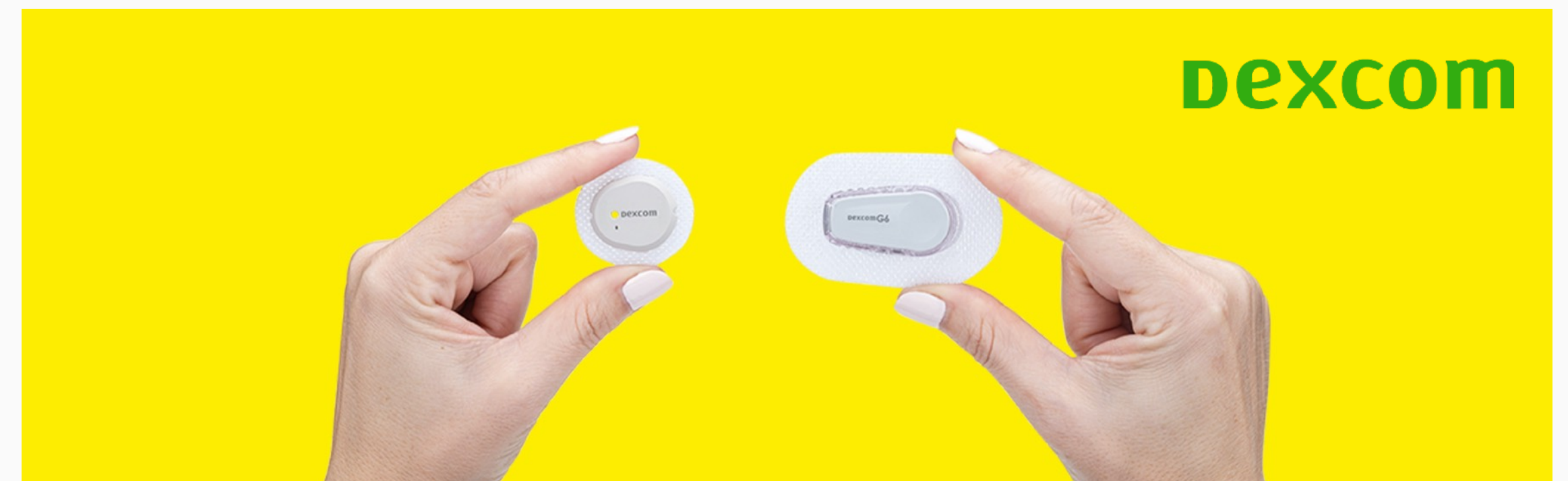
- **Continuous Glucose Monitors [CGM]**
 - Dexcom G7
 - Freestyle Libre 3
- **Automated Insulin Delivery Systems [AID]**
 - Tandem t:slimX2 with Control-IQ
- **Smart Pens**
 - Medtronic InPen
- **Questions?**



Dexcom G7

Continuous Glucose Monitor

- 14 day wear time
- Disposable, all one piece
- Smaller and flatter to the skin
- 30 minute warm-up period
- Customizable alerts and alarms (e.g. rapid rise and fall alarm only outside of target range)
- Removed two adhesive ingredients that were shown to cause irritation
- Clarity reports built into G7 app for ease of viewing

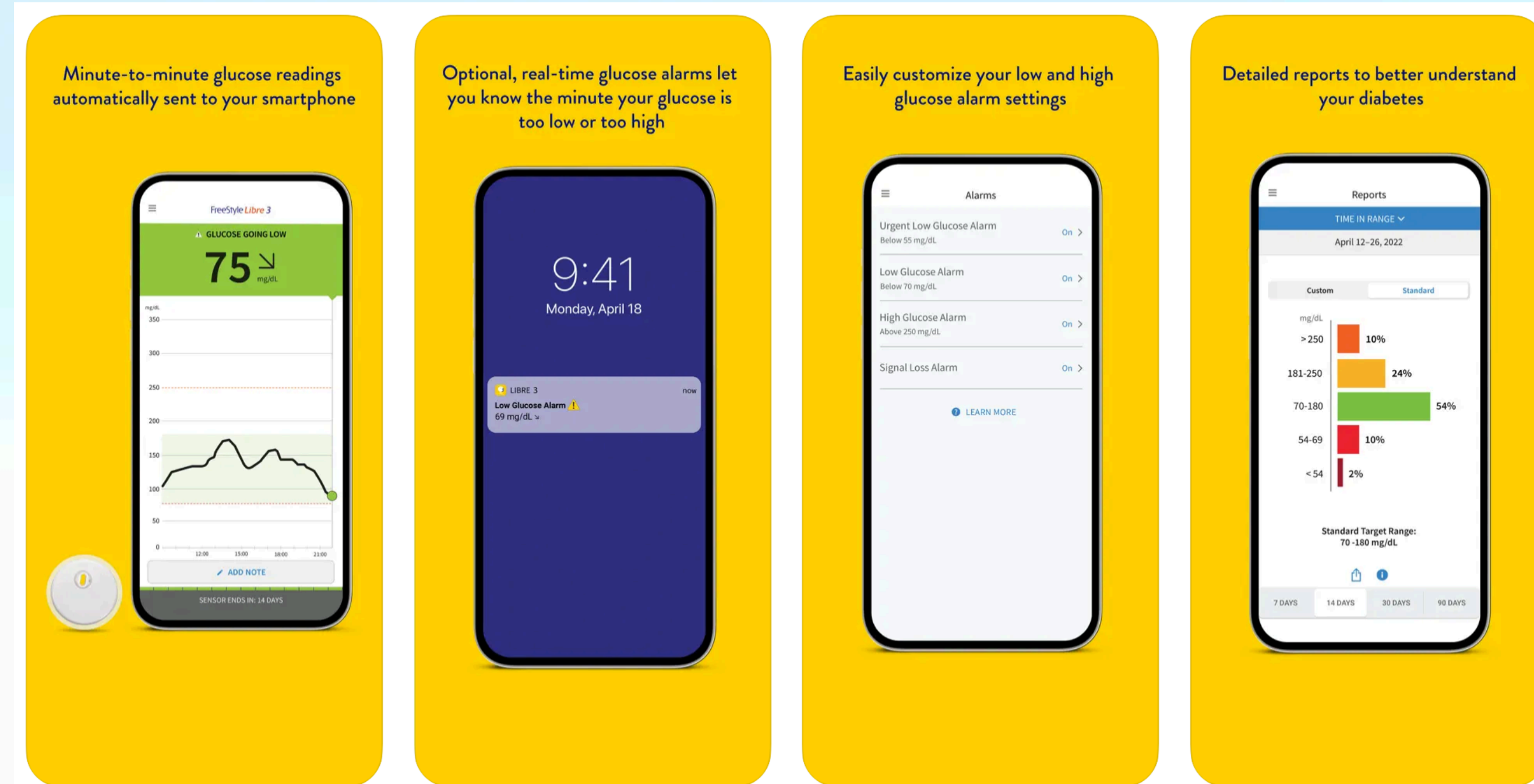


Libre 3

Continuous Glucose Monitor

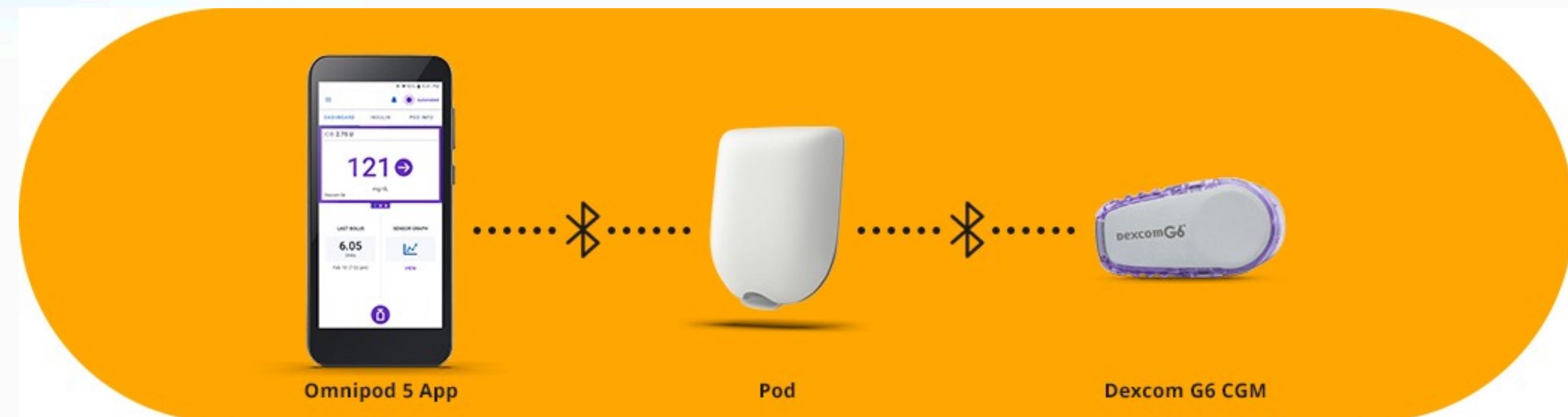


- Smallest CGM on the market - the size of 2 pennies stacked on top of each other
- Applicator has been condensed to one piece
- Significant improvement in accuracy - MARD score of 7.9% (versus 9.2% with Libre 2)
- Important to note:
 - No receiver option, only compatible with smartphones
 - Not compatible with any insulin pumps at this time



Omnipod 5 Automated Insulin Delivery

- Tubeless (patch) pump that connects to Dexcom G6
- Can be controlled by compatible smartphone (Android only at this time) or an Insulet-provided controller
- Auto-adjusts basal delivery based on CGM input even when phone/controller are more than 5 feet away
- Has Activity Mode option for extra low protection
- All supplies available in commercial/retail pharmacies

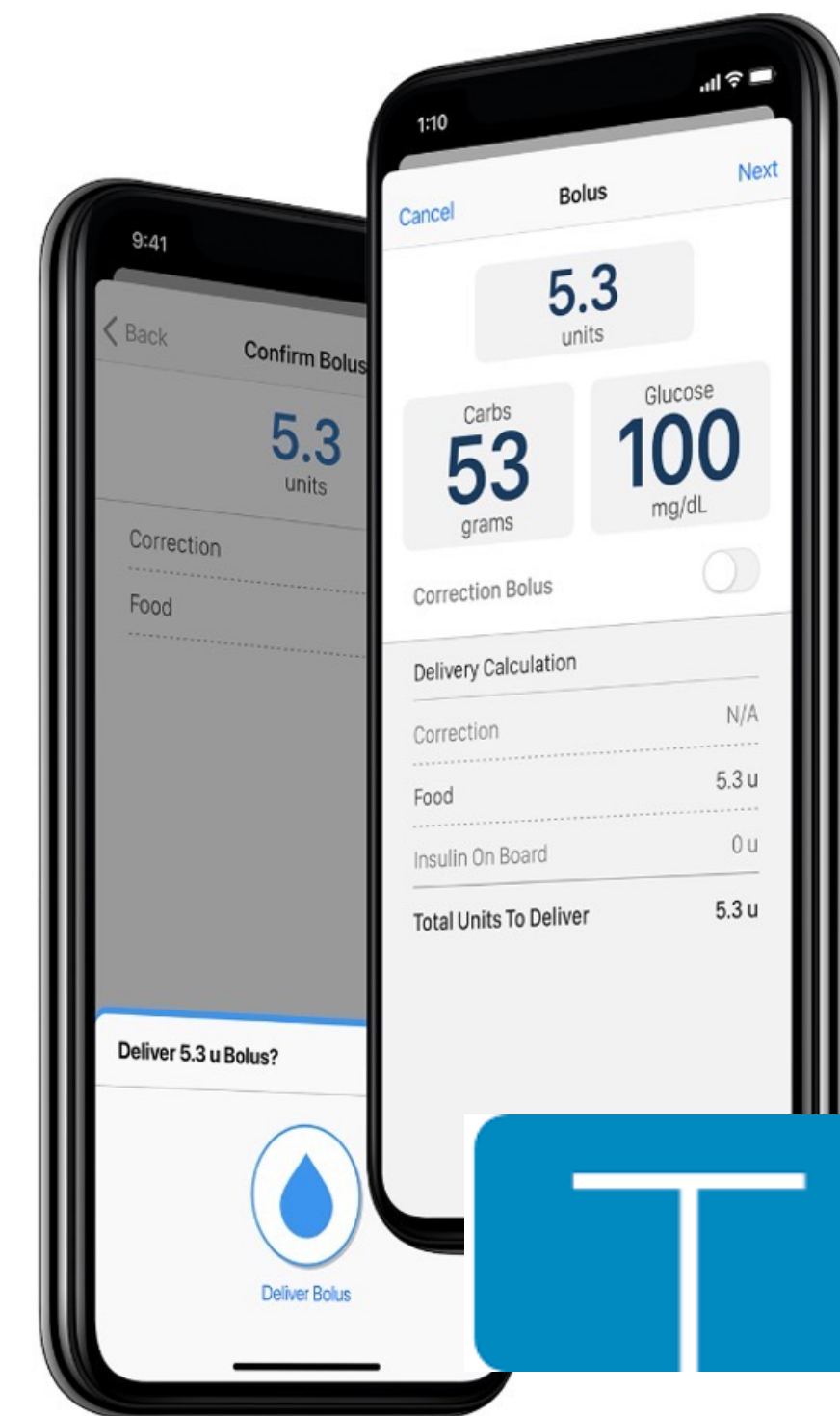


Insulet

Control-IQ

Automated Insulin Delivery

- Small tubed pump that connects with Dexcom G6
- Auto-adjusts basal insulin delivery and provides auto-correction boluses based on CGM input
- Can be programmed for Sleep or Exercise Activities
- Offers many different infusion set options for different body shapes and sizes
- Links to compatible smartphones for remote bolus capability

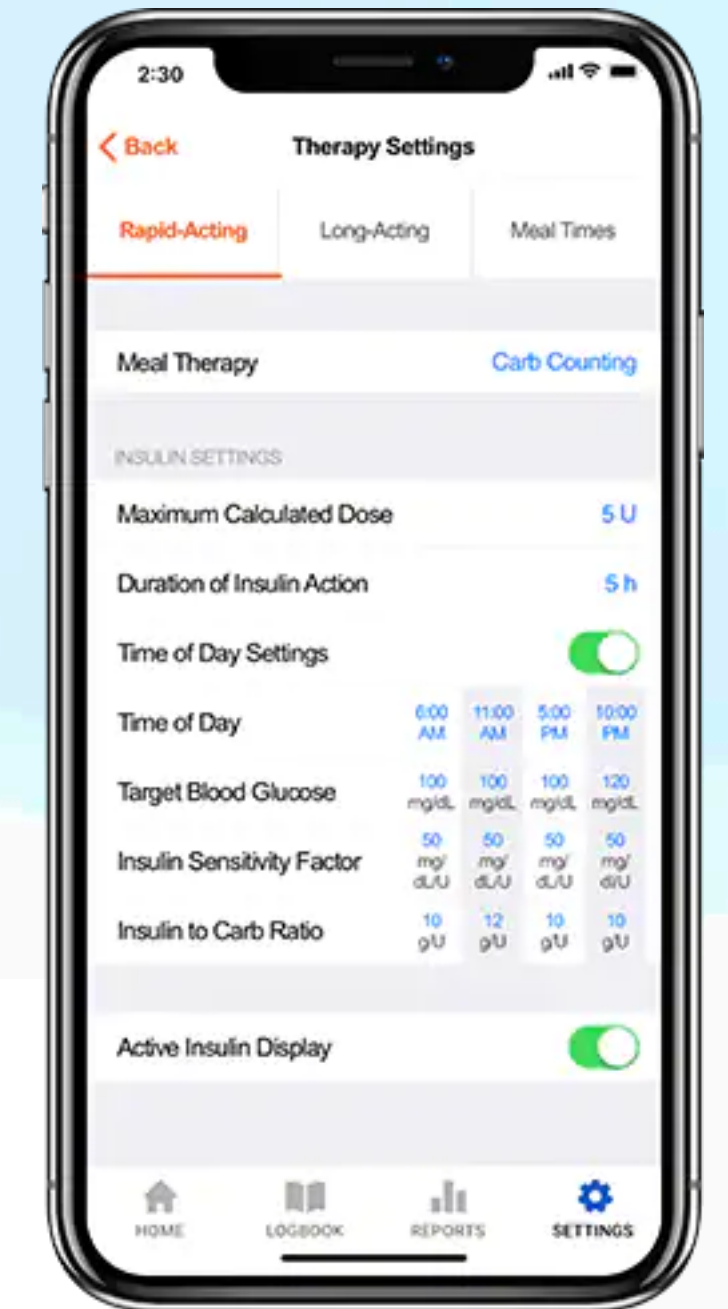
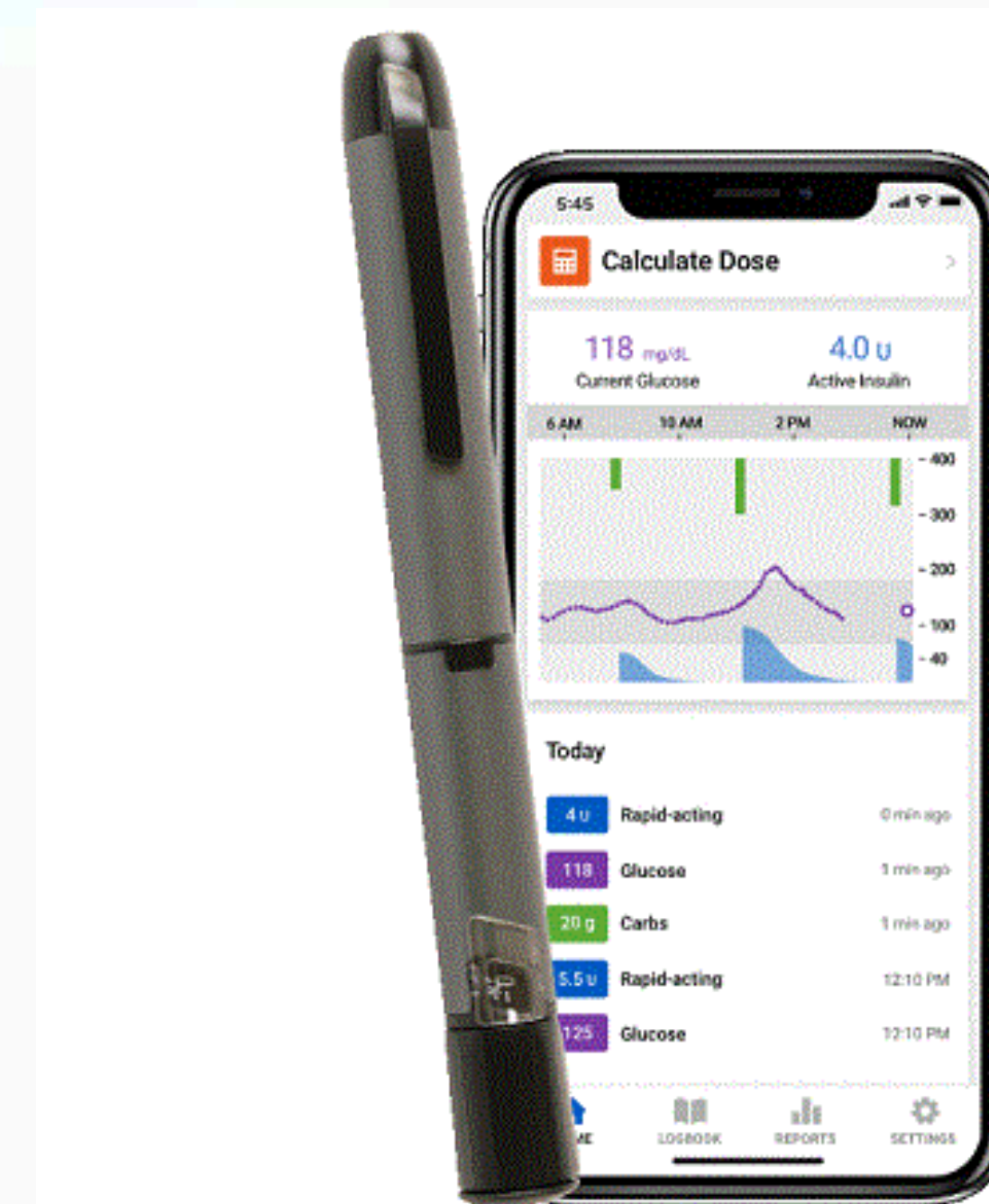


TANDEM[®]
DIABETES CARE

InPen

Bluetooth-Enabled Insulin Pen

- Reloadable fast acting insulin pen that links with smartphone to track doses and insulin on board
- Approved for use with U100 insulins that are available in cartridges
- Can set custom reminder notifications for dosing - long acting, missed meal, etc.
- Compatible with several CGM options
- Creates PDF reports about glycemic control and insulin delivery; useful for patients and providers to adjust doses



Medtronic

Questions?

Thank you!