



CHILDREN HOSPITAL OF PHILADELPHIA CONGENITAL HYPERINSULINISM CENTER

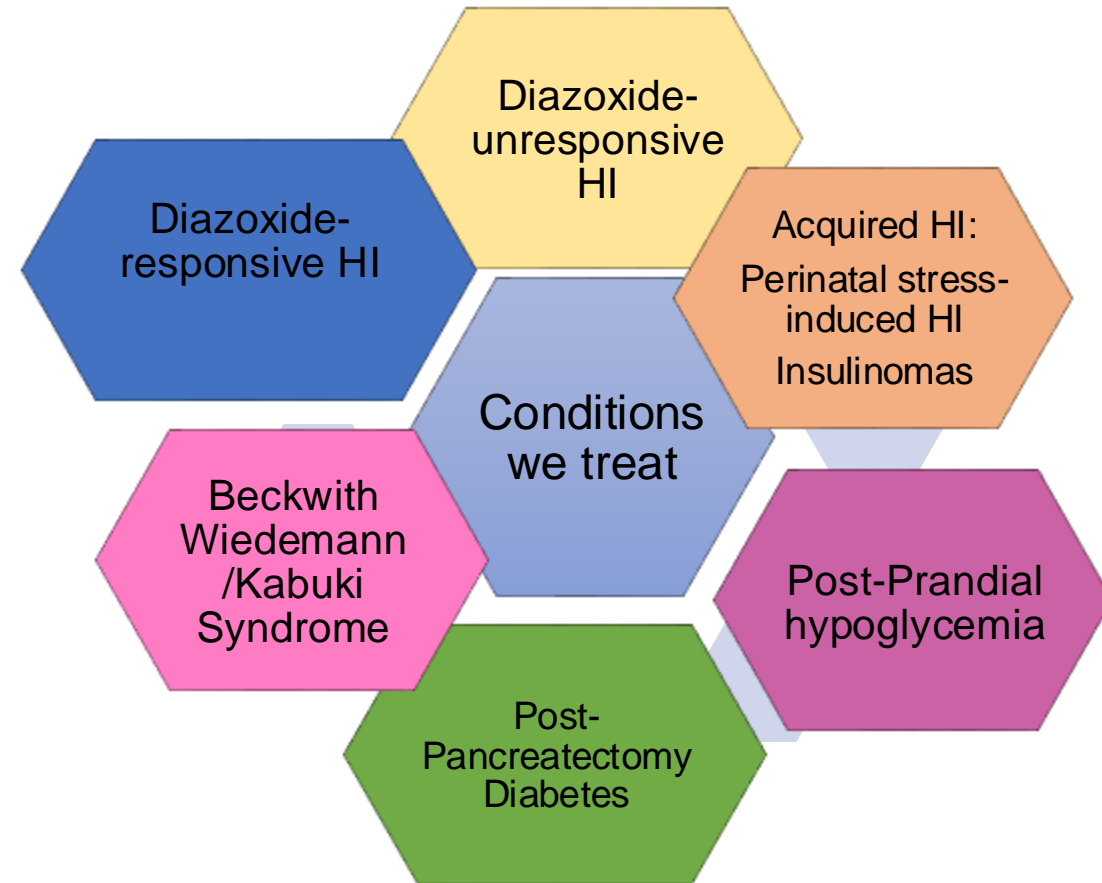


Diva D. De León-Crutchlow, MD, MSCE
Chief, Division of Endocrinology and Diabetes
Director, Congenital Hyperinsulinism Center
The Children's Hospital of Philadelphia
United States

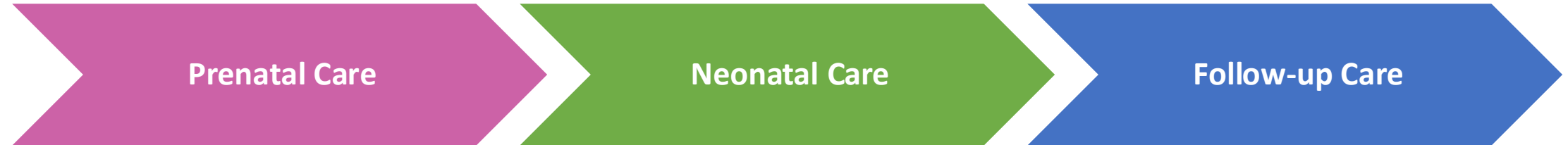


CHOP Congenital Hyperinsulinism Center

- Funded in 1998
- Our center has:
 - Treated more than 1,750 children with congenital HI
 - Performed more than 635 pancreatectomies
 - Performed more than 500 ^{18}F -DOPA PET scans
 - Cured more than 250 children with focal disease
- Our collaborative team of experts evaluates and treats children with congenital hyperinsulinism and other associated conditions



Multidisciplinary Care throughout the HI journey

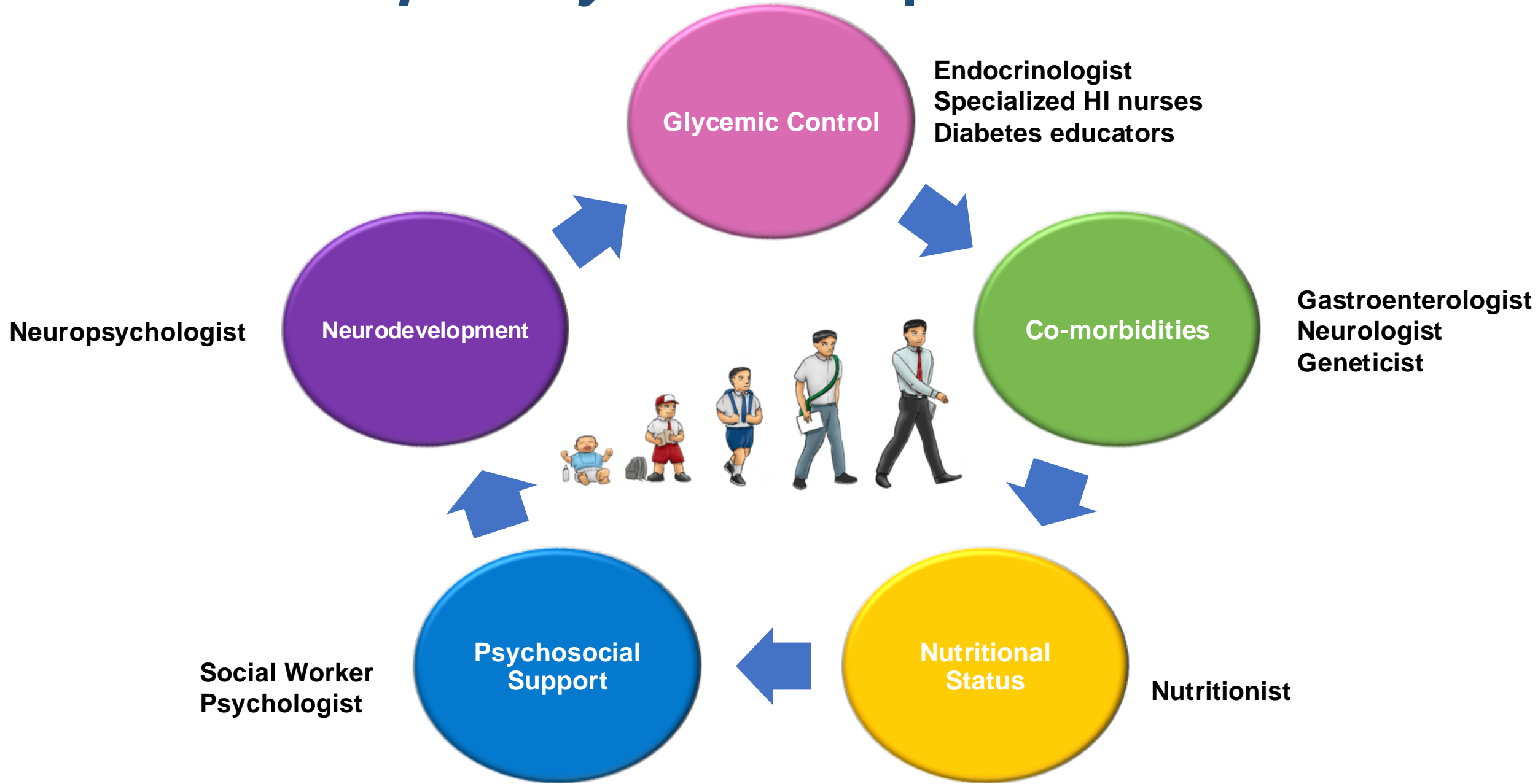


- Genetic counselor
- Endocrinologist
- High-risk obstetrician
- Special Delivery Unit

- Endocrinologist
- Neonatologist
- Geneticist
- Nutritionist
- Social worker
- Psychology
- Radiologist
- Pediatric Surgeon
- Anesthesia
- Pathologist
- Case Management

- Endocrinologist
- Gastroenterologist
- Neurologist
- Psychologist
- Neuropsychologist
- Nutritionist
- Geneticist/genetic counselor
- Social worker

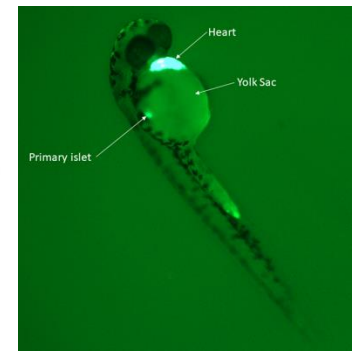
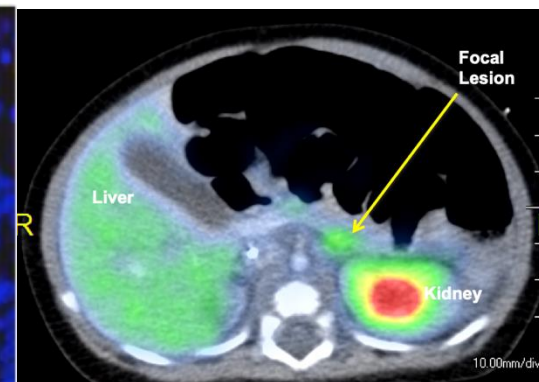
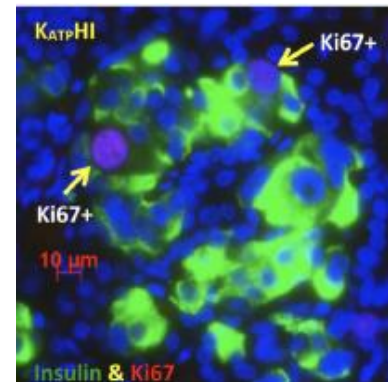
Multidisciplinary Follow-up Care in HI



CHOP HI Center Research Team

➤ Laboratory-based and patient-oriented research to address the unsolved problems in HI:

1. To improve our knowledge of the molecular genetics and pathophysiology of HI
 - Comprehensive database and biorepository
 - Genomic approaches
 - Islet/patient phenotyping
2. To identify novel therapeutic targets and to develop novel therapies for HI
 - Several models of disease: primary islets, mouse models, zebrafish model
3. To describe outcomes in HI:
 - Neurological consequences of HI
 - Long-term outcomes



CHOP Hyperinsulinism Team

Endocrinology:

Diva D. De Leon-Crutchlow, MD, MSCE

Katherine Lord, MD

Winnie Sigal, MD

Elizabeth Rosenfeld, MD

Heather McKnight, CRNP

Emily Wilkinson, CRNP

Nicole Stewart, RN

Jordan Evans, RN

Vicki Sanders, Genetic counselor

Leela Morrow, Psychologist

Sophie Foss, Neuropsychologist

Saliyah Johnson, Social Worker

Liesje Carney, Nutrition

Lauren Cherry, Nutrition

Surgery:

N. Scott Adzick, MD

Radiology:

Lisa States, MD

Susan Becker, RN

hyperinsulin@chop.edu

215-590-7682

hireasearch@chop.edu

Research Funding:

Federal Funding

Philanthropy

Private Foundations

CHOP HI Frontier Program

Pathology:

Tricia Batthi, MD

Gastroenterology:

Asim Maqbool, MD

Genetics:

Jennifer Kalish, MD, PhD

De Leon's Hyperinsulinism Research Lab:

Christine Juliana

Kara Boodhansingh

Jinghua Chai

Pan Chen

Joshua Benjet

Shao Gong

Lauren Mitteer

Brianna Carvalho

Jessica Meline

Kathy Trevor

Molly Cannon



Thank You

hyperinsulin@chop.edu
215-590-7682

